

monolith[®]

VOGUISH SURFACES



UNFOLD THE POWER OF GRIT AND
GRACE WITH GRANOLITH SURFACES

800x
1600
mm

GRANOLITH
SURFACE

JEMSTONE
Collection

AT MONOLITH WE PLAN, DESIGN, AND
CREATE CERAMICS THAT ARE SHAPED
**TO TRANSFORM YOUR SPACES THE WAY
YOU HAVE ENVISIONED THEM.**

monolith[®]
VOGUSH SURFACES

OUR JOURNEY

A part of the Murano group of companies, Monolith is a new-age and uprising manufacturer and exporter of large-format ceramic tiles. We are rooted in India, creating products in-line with contemporary trends of architecture to deliver excellent experiences and lavish all across the world with our voguish surfaces.

Our slabs are designed within a framework that finds a blend of modern edge and classic vitality to become an essential choice for the future architectural and interior design style. This superior quality is achieved through research and innovation. We at Monolith believe in living life king size and our grand tiles are designed to evoke luxury and grandeur in every place they are installed.

24 YEARS *of*
EXCELLENCE

monolithsurfaces.com



LEGENDARY AESTHETICS

Infused with a textured design in nuanced tones that echo the spirit of modern design, these iconic surfaces stand as an epitome of classic beauty. The GHR finish is a perfect blend of strength, style, and sustainability, making it an excellent choice for any project.

Each piece serves as an inspiring example for crafting stunning spaces. Add depth and character to your spaces with these innovative, artistic, and functional surfaces.

monolithsurfaces.com

INJECT YOUR SPACE WITH
PROFOUND AUTHENTICITY WITH
**THE SURFACES THAT EMBODY
TEXTURED GRANDEUR**



**BLAZE
PUNCH**



UNLEASH THE ART

Monolith's revolutionary surface solution is here to redefine your concept of luxurious living and provide you with a high-end experience. Available in a variety of rich tones and textures, this collection is the perfect choice for modern interiors.



JEMSTONE
WHITE

JEMSTONE
CREMA

JEMSTONE
SAND

JEMSTONE
GREY

JEMSTONE
NERO

FUTURE READY SURFACES FOR PREMIUM LIVING

Available in 5 iconic shades and refined textures, these surfaces are your quintessential choice for creating your ideal space. They are perfect for both contemporary and classic designs. They elevate interiors with their superior quality and enduring appeal.

The richly textured designs of these surfaces add an air of luxury and refinement to any space. They offer not only aesthetic appeal, but also durability, functionality, and everything that is classy—nothing ordinary.

STRENGTH

Building Area	Land Area	Office Area	Production Capacity
65K sq. mtrs	92K sq. mtrs	5K sq. mtrs	4M sq. mtrs /year



THICKNESS

Engineered for durability and versatility, these 9mm thick surfaces provide robust support and exceptional performance. Ideal for high-traffic areas, these resilient surfaces never fail to deliver strength.

**800x
1600mm**

SIZE

The 800x1600mm size makes spaces look clean and modern, offering ample coverage. Favored for compact or large spaces, this size enhances aesthetics and functionality.

TECHNICAL FEATURES

The non-porous, easy-to-clean finish of these surfaces helps maintain their aesthetic appeal over time. Their high resistance to scratches, stains, moisture, and heat makes them ideal for indoor applications. Bring these highly functional and practical surfaces into your space and enhance them with their durability and elegance.



Scratchproof



Not Prone To Wear



Easy To Clean



Stainproof



Impact - Resistant



Acid - Resistant



Guaranteed Stability Over Time



Indoor And Outdoor Use



Withstands Sudden Temperature Changes



UV - Resistant



Resistant To Mould And Mildew



Recyclable

APPLICATION AREAS

These magnificent surfaces offer endless application possibilities and are perfect for any setting. Whether you are designing a kitchen, bathroom, or office space, these surfaces ensure ultimate versatility and a perfect combination of minimalism and durability for any project.



Floor



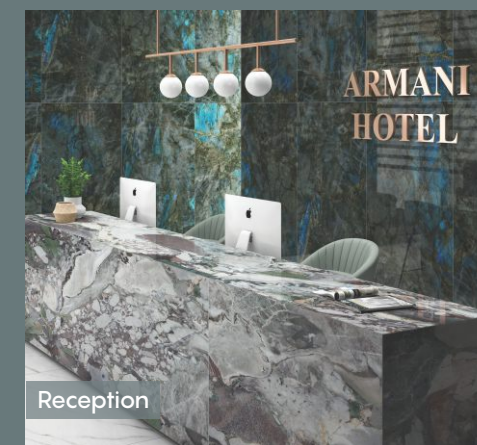
Wall



Tabletop



Kitchen



Reception



Staircase



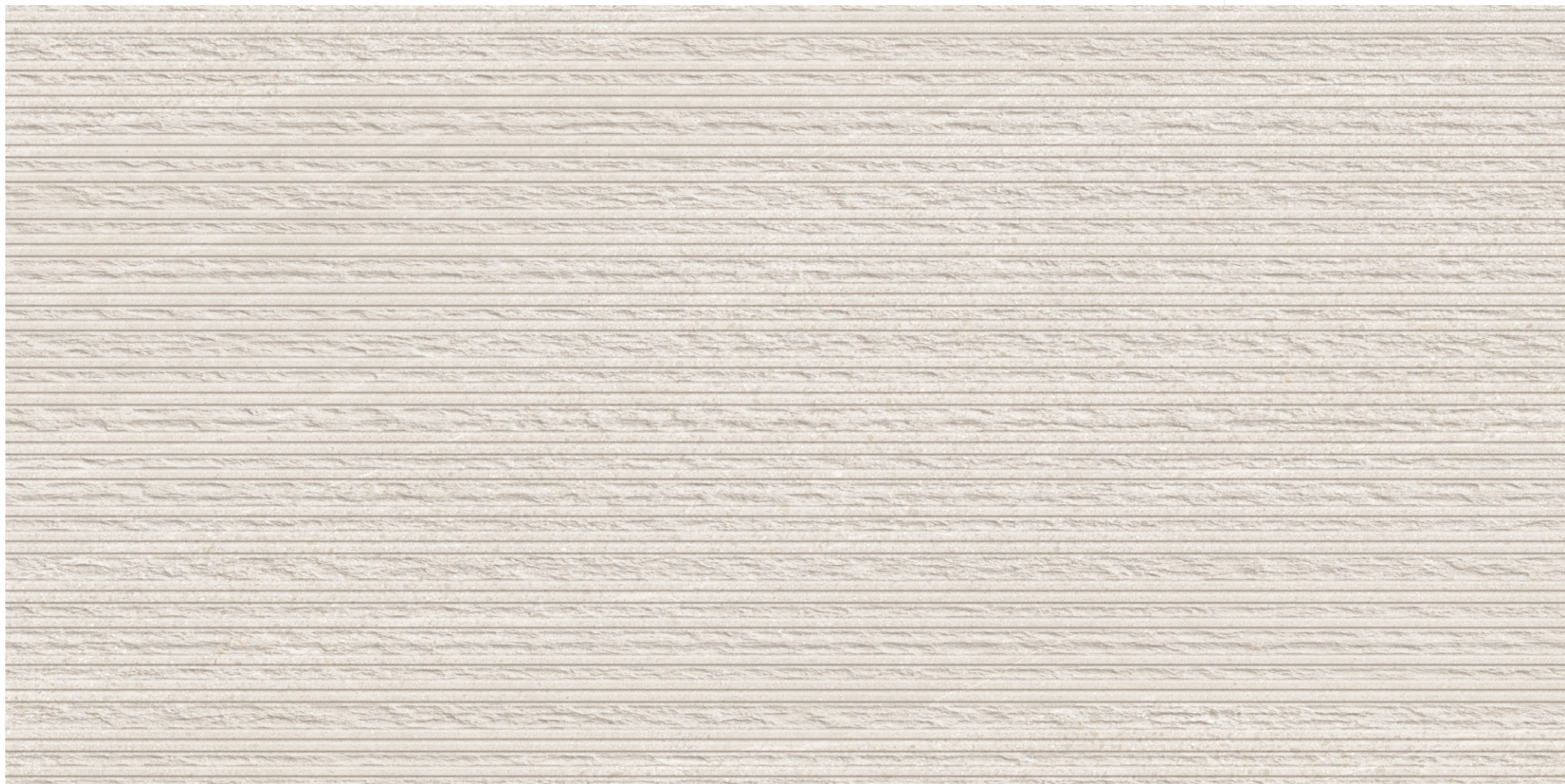
Showroom



Bathroom



Livingroom



Jemstone White Blaze



monolith[®]
VOGUSH SURFACES

Size: 800x1600mm

Surface: Granolith

Thickness: 9mm

Body: Color Body

Scan for
Virtual Tour



Jemstone White

Bring an air of refined luxury and classic charm to any space with these breathtakingly artistic surfaces.

BLAZE PUNCH



Random - 5 Faces



Preview of_ Jemstone White



Jemstone Crema Blaze



monolith[®]
VOGUSH SURFACES

Size: 800x1600mm

Surface: Granolith

Thickness: 9mm

Body: Color Body

Scan for
Virtual Tour



Jemstone Crema

Adorn your space with the modern elegance of our surfaces, crafted to elevate any environment.

BLAZE PUNCH



Random - 5 Faces



Preview of_ Jemstone Crema



monolith[®]
VOGUISH SURFACES

Size: 800x1600mm

Surface: Granolith

Thickness: 9mm

Body: Color Body

Scan for
Virtual Tour



Jemstone Sand Blaze

Jemstone Sand

Give your space an elite experience with these nuanced yet strikingly mesmerizing surfaces.

BLAZE PUNCH



Random - 5 Faces



Preview of_ Jemstone Sand



monolith[®]
VOGUSH SURFACES

Size: 800x1600mm

Surface: Granolith

Thickness: 9mm

Body: Color Body

Scan for
Virtual Tour



Jemstone Grey Blaze

Jemstone Grey

The sleek lines and vein-like textures of the collection add beauty and depth to any space.

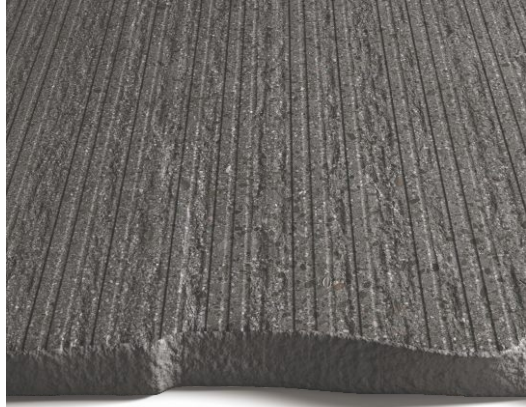
BLAZE PUNCH



Random - 5 Faces



Preview of _ Jemstone Grey



monolith[®]
VOGUSH SURFACES

Size: 800x1600mm

Surface: Granolith

Thickness: 9mm

Body: Color Body

Scan for
Virtual Tour



Jemstone Nero Blaze

Jemstone Nero

Suit up your space with the rich tint that exudes luxury and provides a perfect backdrop for bold and subtle accents.

BLAZE PUNCH



Random - 5 Faces

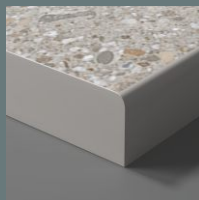


Preview of_ Jemstone Nero

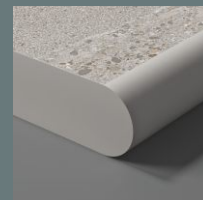
EDGE PROFILES

A range of thoughtfully selected edge profiles and joint possibilities are available to enhance the visual appeal and functionality of your spaces. Each profile is customized to complement any design and seamlessly integrate with the overall interior. These options also offer practical benefits, ensuring durability, safety, and long-lasting performance.

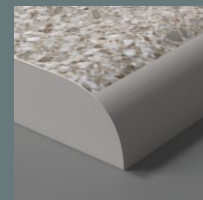
Eased



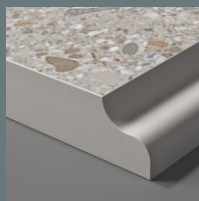
Full Bullnose



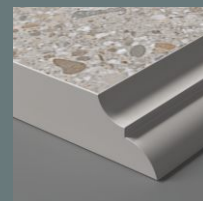
Half Bullnose



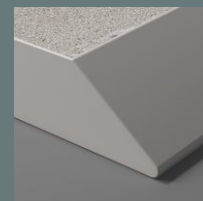
Classic Ogee



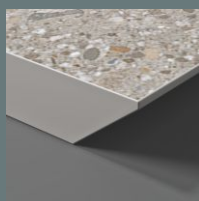
Elite



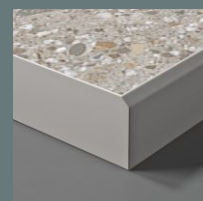
Shark Nose



Bevel



Chamfer



Double Pencil



Joint Possibilities



Birds beak



45° corner



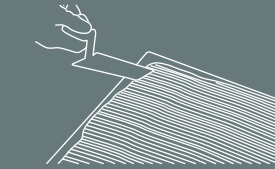
Soft corner

INSTRUCTIONS FOR MANUAL INSTALLATION

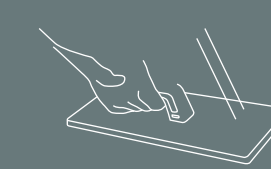
SINGLE LAYER METHOD



DOUBLE-LAYER METHOD



COMPRESSING THE SLAB



IMPORTANT

All cutout corners must have a minimum diameter of 14". Never leave 90° angles. We recommend a radius of more than 14" for kitchen designs that have favorable settings, as it makes the countertop firm.



✓ CORRECT



✗ INCORRECT



✗ INCORRECT



✗ INCORRECT

CLEANING & MAINTENANCE

Our products are non porous (due to their high quality raw materials, stringent production parameters and state of the art technology), hence any dust or deposited waste cannot penetrate the surface.

For most cases only a damp cloth is sufficient for cleaning.

Regular cleaning highlights the aesthetic features of the surface and gives it exceptional shine.

For highly aggressive staining caused by some common food and substances follow the table below.

TYPES OF STAIN	CHEMICAL PRODUCTS	EXAMPLES
Grease	Alkaline - Solvent	Detergent
Oil	Solvent	Ammonia, Baking Soda
Ink	Oxidant - Solvent	Alcohol, Liquid Bleach, Nail Paint Remover
Rust	Acid	Hydrochloric Acid, Vinegar, Red Harpic
Lime	Acid	Descaling Agents, Hydrochloric Acid
Cement	Acid	Hydrochloric Acid
Wine	Alkaline	Ammonia, Liquid Bleach
Coffee	Alkaline - Solvent	Ammonia, Liquid Bleach
Rubber	Solvent	Alcohol, Thinner
Plaster	Acid	Hydrochloric Acid
Candle Wax	Solvent	Alcohol, Thinner
Iodine	Oxidant	Liquid Bleach
Blood	Oxidant	Liquid Bleach
Ice Cream	Alkaline	Liquid Bleach

Note: It is recommended that any kind of stain needs to be cleaned immediately, as soon as possible.

Jemstone Collection

Size: 800x1600mm

Thickness: 9mm

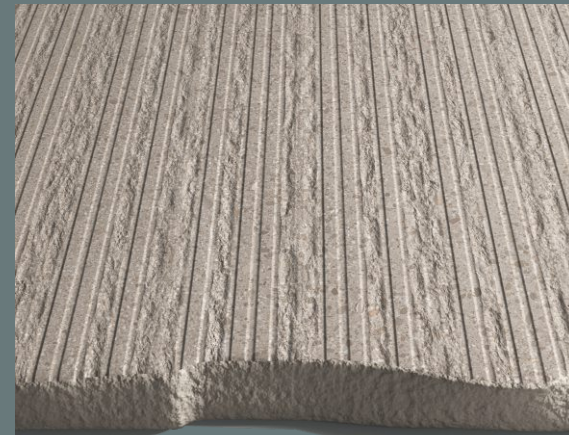
Body: Color Body



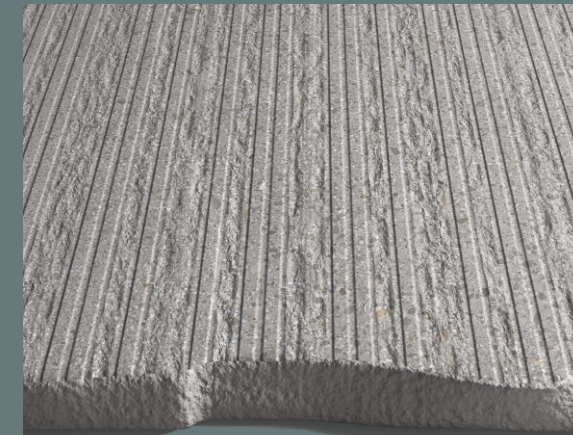
Jemstone White



Jemstone Crema



Jemstone Sand



Jemstone Grey



Jemstone Nero



Technical Specifications

CHARACTERISTICS	STANDARD AS PER ISO-13006/EN14411 GROUP BIA	MEAN VALUE OF MONOLITH GVT	TEST METHOD
REGULATORY PROPERTIES			
Deviation in length & width	±0.5 %	±0.2 %	ISO-10545-2
Deviation in thickness	±5.0 %	±4.0 %	ISO-10545-2
Straightness in side	±0.5 %	±0.15 %	ISO-10545-2
Rectangularity	±0.6 %	±0.2 %	ISO-10545-2
Surface flatness	±0.5 %	±0.2 %	ISO-10545-2
Color difference	Unaltered	Slight variation is possible due to different batches as per signed samples	ISO-10545-16
Glossiness	As per mfg	Sharp	GLOSSOMETER
SURFACE MECHANICAL PROPERTIES			
Water absorption	< 0.50 %	< 0.5 %	ISO-10545-3
Apparent density	> 2.0 g/cc	> 2.28 gm/mm ²	DIN 51082
MASSIVE MECHANICAL PROPERTIES			
Modulus of rupture	Min. 35 N/mm ²	Min. 35 N/mm ²	ISO-10545-4
Breaking strength	Min. 1300 N	Min. 1700 N	ISO-10545-4
Impact resistance	As per mfg.	Min. 0.55	ISO-10545-5
SURFACE MECHANICAL PROPERTIES			
Surface abrasion resistance	As per mfg	Min. Class-4	ISO-10545-7
MOHS hardness	As per mfg	Min. 5	EN 101
THERMO HYGROMETRIC PROPERTIES			
Frost resistance	No damage	No damage	ISO-10545-12
Thermal shock resistance	No damage	No damage	ISO-10545-9
Moisture expansion	Nil	0.1 (mm/3)	ISO-10545-10
Thermal expansion (COE)	Max. 9.0 x 10 ⁻⁶	Max. 6.5 x 10 ⁻⁶	ISO-10545-8
Crazing resistance	As per mfg	Min. 7 Cycle	ISO-10545-11
CHEMICAL PROPERTIES			
Chemical resistance	No damage	No damage	ISO-10545-13
Stain resistance	Resistant	Resistant	ISO-10545-14

Size	Thickness (approx.)	Pieces / Box	Area / Box	Wt./Box (approx.)
800x1600mm	9 mm	2 pcs.	2.56 sq. mtr.	52 kgs.

Laying & Levelling



Base Structure



Cement laying on tile



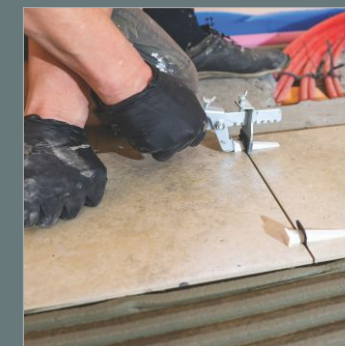
Joints



Fixing the tile



Leveller



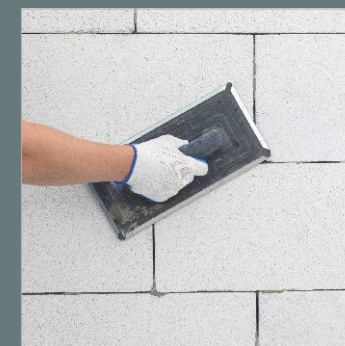
Levelling Wedges



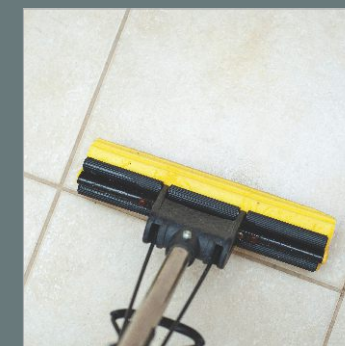
After levelling process, leave it for 8-12 hours



Remove wedges once it is dry



Joint Grouting



Final Cleaning

Floor and Wall Tiles Installation Method

1. First spread the cement mixer onto the floor and wall substrate.
2. At the same time, apply the cement mixer onto the back of the slab with a tile trowel.
3. The recommended cement mixer must be spread over in one direction only.
4. Use a trowel and follow the same direction as previously applied to the back of the slab.
5. Be careful to maintain a minimum joint of 3mm.
6. Tap the slab with a rubber trowel for a complete fixing, ensuring the air is expelled. It is recommended to start from the centre of the slabs and then move towards the edges.
7. Complete the laying operations using a suitable sealant, while keeping at least a 3mm joint through the use of spacers.
8. To make this task easier, use the special device for pulling over the slabs, available in the market.
9. Levelling wedges at each linear metre of the slabs are recommended.
10. After levelling process leave it for 8-10 hours, remove wedges once it gets dry.

monolith[®]
VOGUISH SURFACES

Khokhara Road, Near Hanuman Temple,
At Bela, Morbi, INDIA

e. info@monolithsurfaces.com
w. monolithsurfaces.com

Scan for Catalogue

