

BELLISIMO
COLLECTION

monolith
VOGUSH SURFACES

800x
1600
mm

Granolith
Surface_

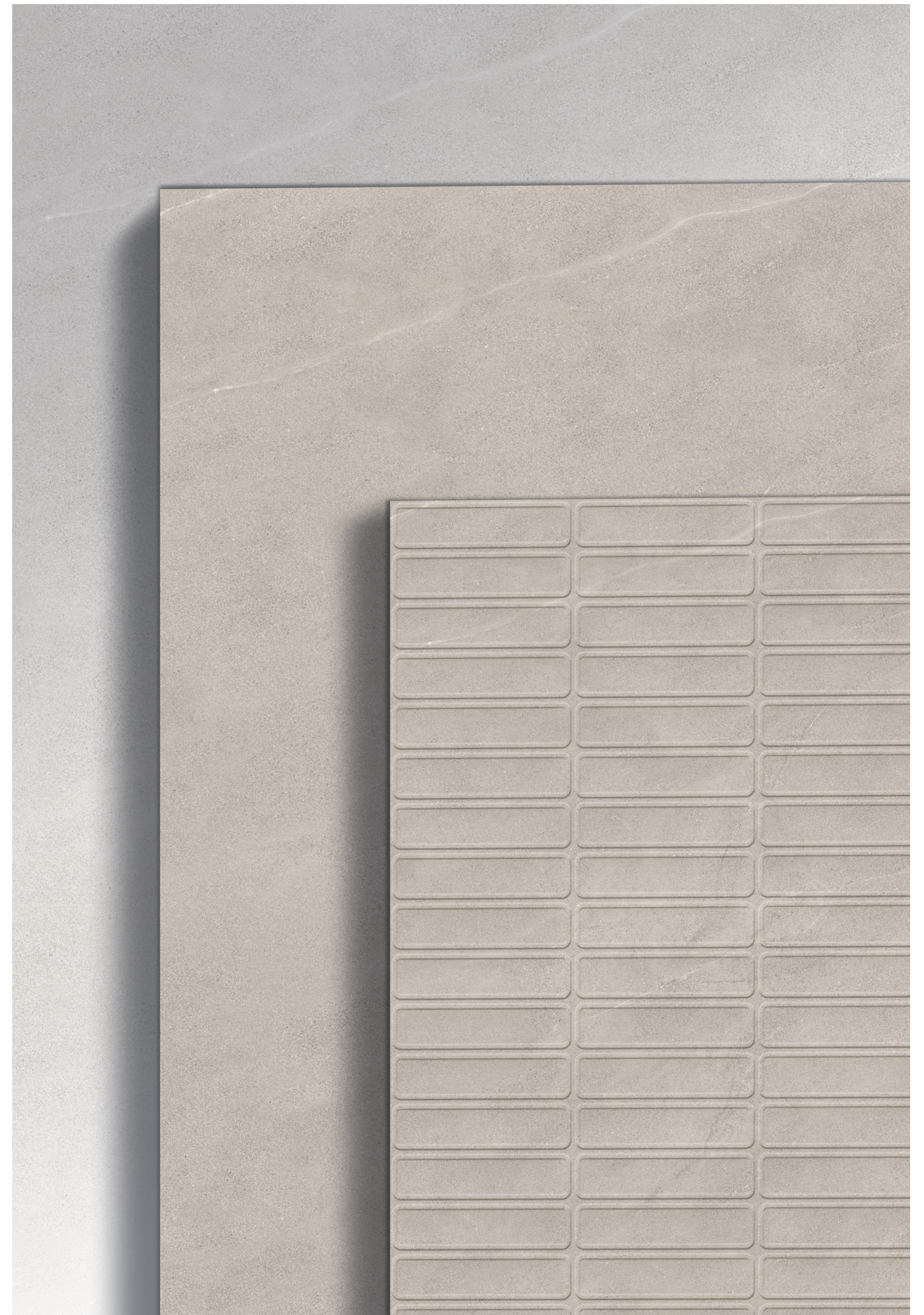
monolith
VOGUISH SURFACES

UNRAVEL THE
RAW ELEGANCE
OF NATURE

EXPLORE UNIQUE
TEXTURES AND EARTHY
COLORS EMBELLISHED
WITH TECHNOLOGICAL
PERFECTION.

23 YEARS *of*
EXCELLENCE

monolithsurfaces.com





ARRAY OF COLORS

4 COLORS

The Bellissimo Series in 800x1600mm size comes in a variety of four colors, each hue representing the down-to-earth dignity that spells class and grace. These ever-popular hues leave you spellbound with a heartwarming experience that evokes awe and admiration for ceramic artistry.

Each shade is inspired by the earthy elements expressing the subdued moods of terrene that fill your spaces with eternal beauty and unparalleled sophistication that is just perfect for contemporary architecture.

SURFACES ENGINEERED TO PERFECTION

**800x
1600mm**

Granolith Surface_

Glazed Vitrified Tiles

Tile Body

The finest quality raw materials make up the resilient and robust tile body of Monolith tiles. The raw materials are ethically sourced and sustainably processed.

Engobe Layer

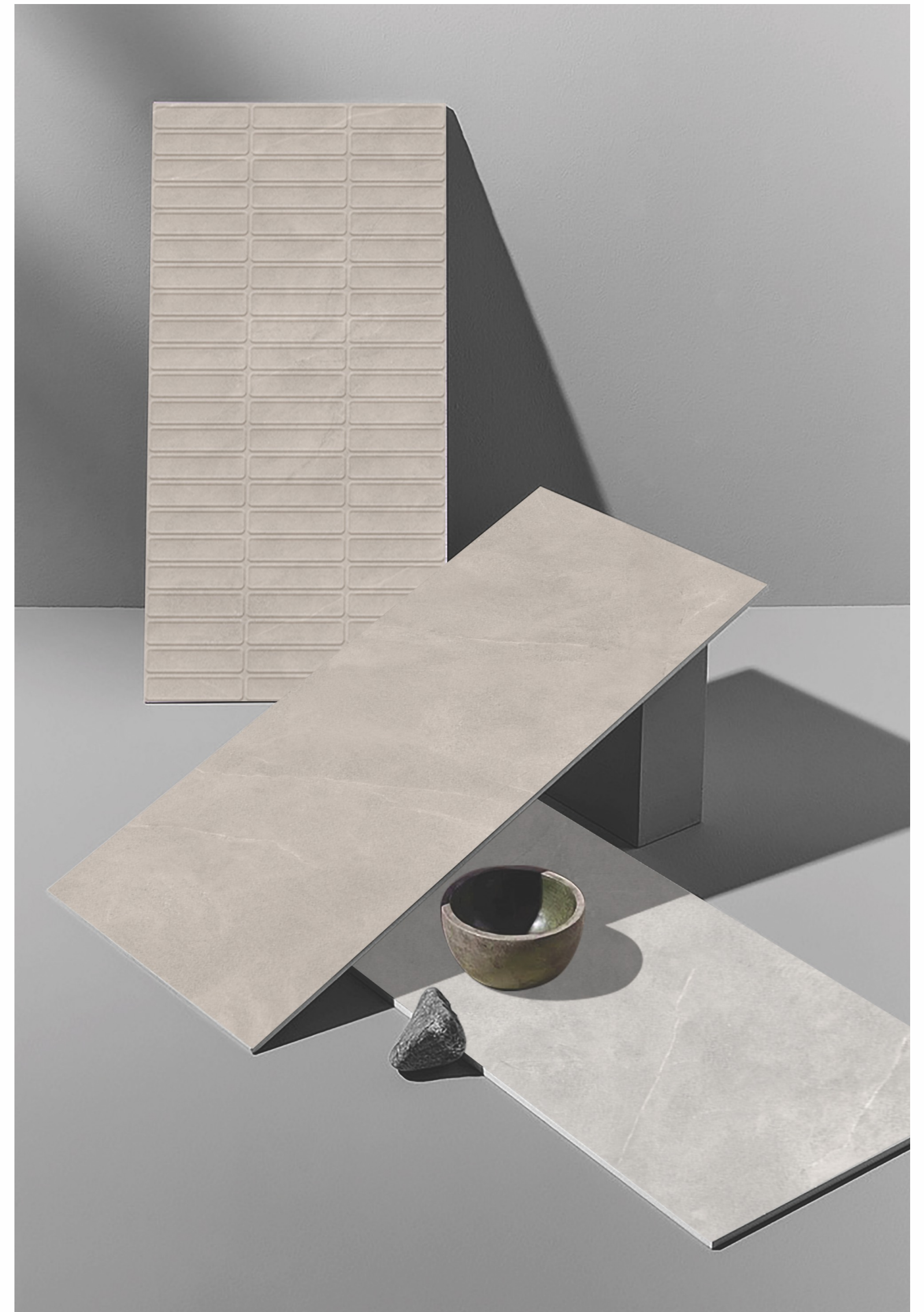
A highly opacious, fusible, and permeable engobe layer makes the second layer of the tiles of Monolith. The layer makes the tiles highly resistant to water absorption for longevity.

High Pigment Digital Printing Ink

The Monolith surfaces get their unique and versatile properties of the design, color, and more in this stage where digital printing is done on the glaze with high pigment ink for excellent results.

Glaze Layer

A high-quality glaze coating is added to the engobe layer of the Monolith tiles giving the tile properties of texture and shine and making them ready for design and color.



ENJOY THE ARTISTIC
FREEDOM OF
EXCITING FORMAT

The 800x1600mm size gives creative freedom to use these surfaces in versatile ways, giving a clean and impeccable look that generates an impression of the vastness of spaces, compelling a majestic appeal that mesmerizes the beholder with admiration and respect for the craft.





EASY TO CLEAN

The superior glaze of the collection makes the surfaces easy to clean and low maintenance.



STAIN RESISTANT

Do not worry about spills and stains with the high stain-resistant glaze of the premium Monolith surfaces.



SCRATCH RESISTANT

Enjoy new-looking surfaces for a very long time with highly scratch and abrasion-resistant surfaces.



TECHNO RICH SURFACES WITH VERSATILE FEATURES

Technical Features:-



Easy To Maintain



UV Resistant



Non-slip



Dimensional Stability



Resistant To Chemicals



Resistant To Acids



Water Proof



Fire Resistant



Prevents Bacterial Growth



Heat Resistant



Frost Resistant



Ecological

Application Areas:-



Residence



Shops



Offices



Airports



Hotels



Public Places



Malls

Surface | Rendom | Thickness
Granolith | **4 Faces** | **9mm**

800x
1600
mm

Touch For
Hear Virtual

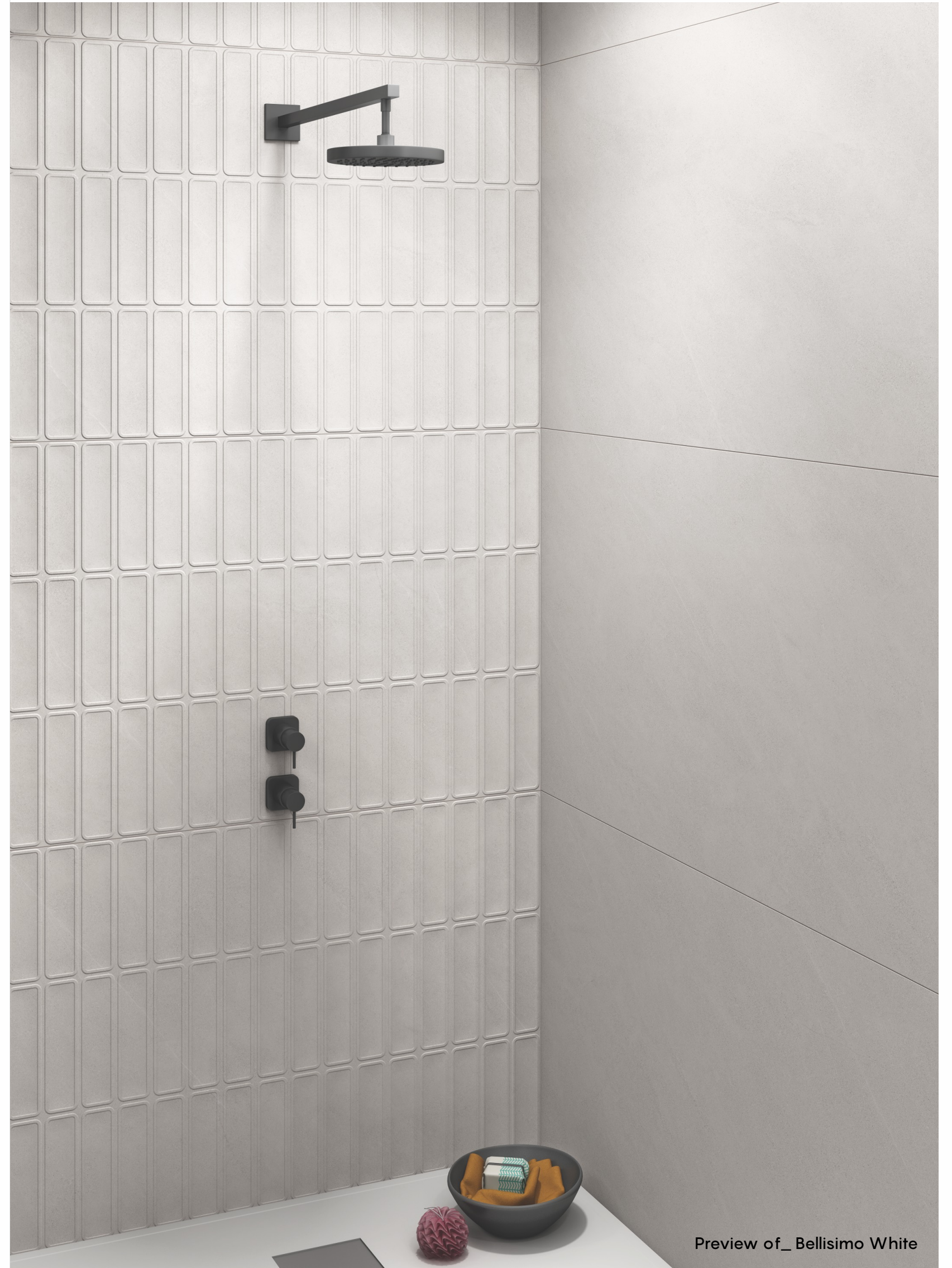
360°



BELLISIMO WHITE



BELLISIMO WHITE LITHOS







Preview of_ Bellisimo Gris

Surface
Granolith

Random
4 Faces

Thickness
9mm

800x
1600
mm

Touch For
Hear Virtual

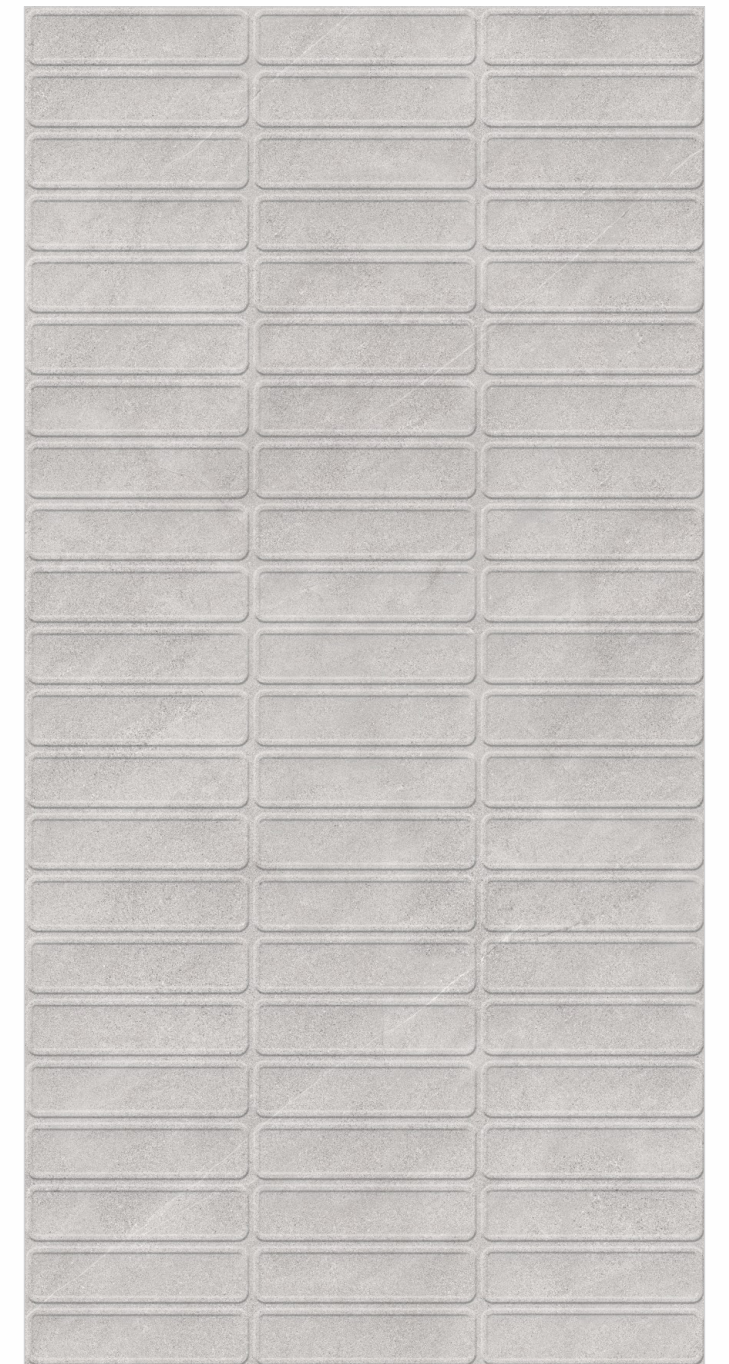
360°



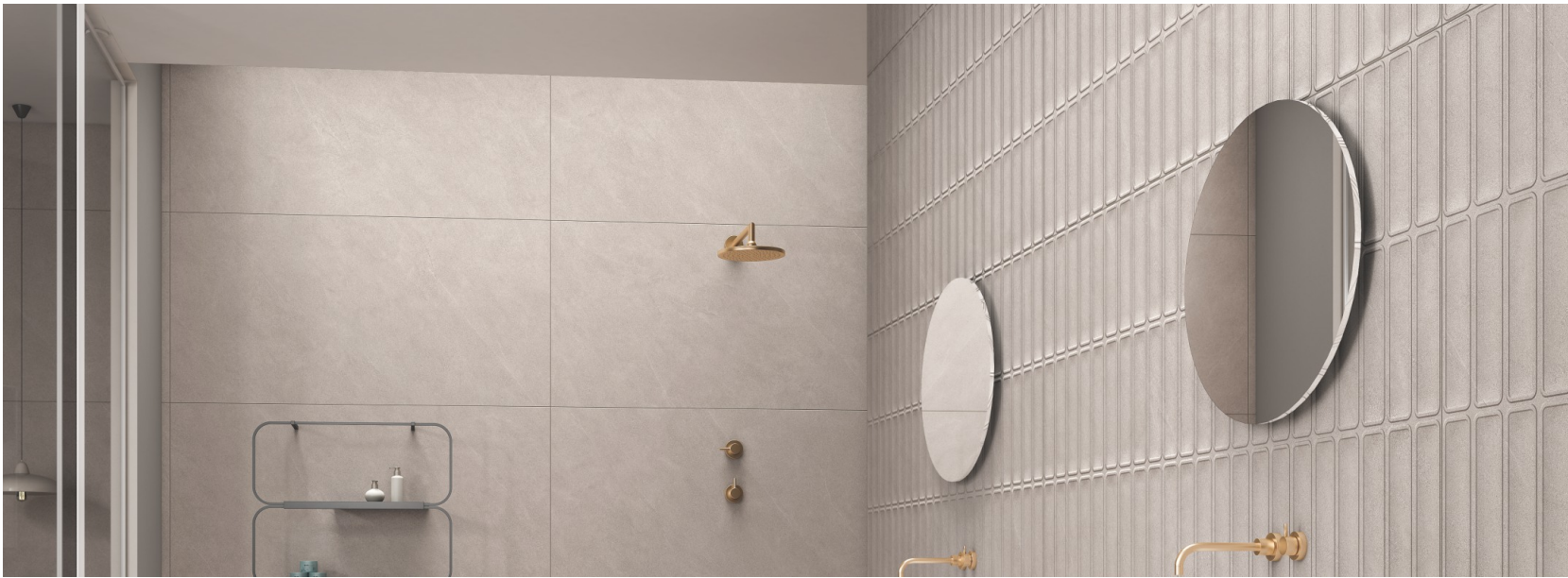
BELLISIMO GRIS



BELLISIMO GRIS LITHOS







Surface | Rendom | Thickness
Granolith | **4 Faces** | **9mm**

800x
1600
mm

Touch For
Hear Virtual
360°



Preview of_ Bellisimo Taupe

BELLISIMO TAUPE



BELLISIMO TAUPE LITHOS





Surface | Rendom | Thickness
Granolith | **4 Faces** | **9mm**

800x
1600
mm

Touch For
Hear Virtual

360°



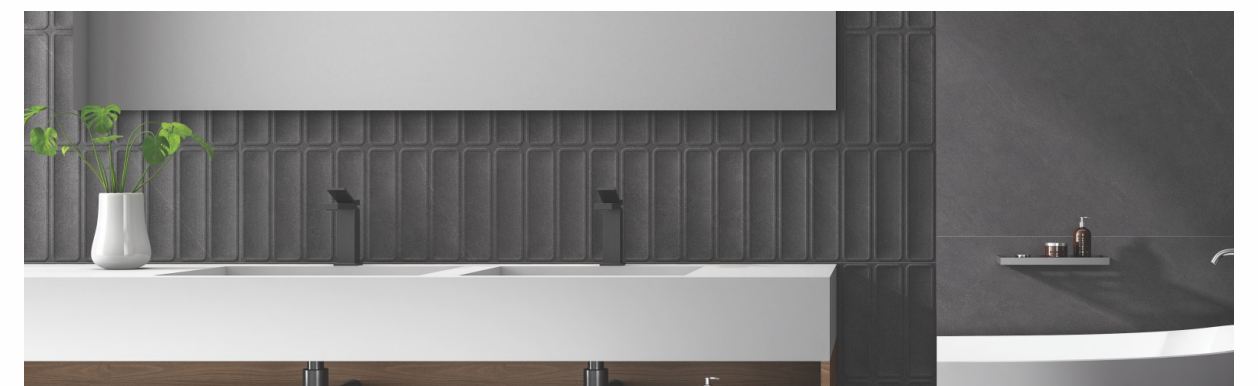
BELLISIMO NERO



BELLISIMO NERO LITHOS



Preview of _ Bellissimo Nero





BELLISIMO WHITE



Random Faces 01



Random Faces 02



Random Faces 03



Random Faces 04

BELLISIMO TAUPE



Random Faces 01



Random Faces 02



Random Faces 03



Random Faces 04

BELLISIMO GRIS



Random Faces 01



Random Faces 02



Random Faces 03



Random Faces 04

BELLISIMO NERO



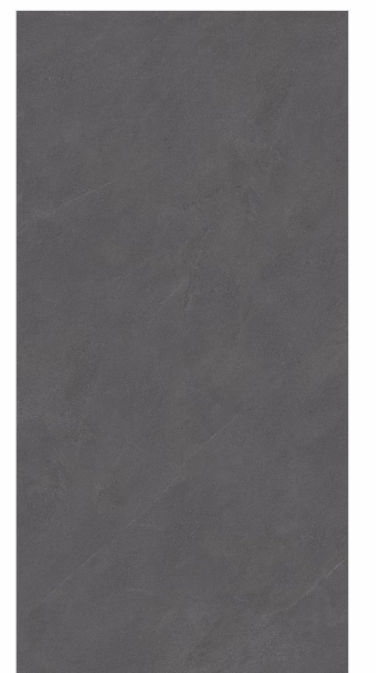
Random Faces 01



Random Faces 02



Random Faces 03



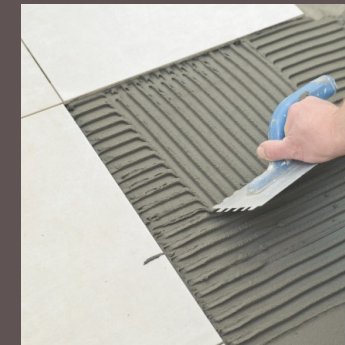
Random Faces 04

Technical Specification

CHARACTERISTIC	STANDARD AS PER ISO-13006/EN14411 GROUP BIA	MEAN VALUE OF MONOLITH GVT	TEST METHOD
REGULATORY PROPERTIES			
Deviation in length & width	±0.5 %	±0.2 %	ISO-10545-2
Deviation in thickness	±5.0 %	±4.0 %	ISO-10545-2
Straightness in side	±0.5 %	±0.15 %	ISO-10545-2
Rectangularity	±0.6 %	±0.2 %	ISO-10545-2
Surface flatness	±0.5 %	±0.2 %	ISO-10545-2
Color difference	Unaltered	Slight variation is possible due to different batches as per signed samples	ISO-10545-16
Glossiness	As per mfg	Sharp	GLOSSOMETER
SURFACE MECHANICAL PROPERTIES			
Water absorption	< 0.50 %	< 0.5 %	ISO-10545-3
Apparent density	> 2.0 g/cc	> 2.28 gm/mm ²	DIN 51082
MASSIVE MECHANICAL PROPERTIES			
Modulus of rupture	Min. 35 N/mm ²	Min. 35 N/mm ²	ISO-10545-4
Breaking strength	Min. 1300 N	Min. 1700 N	ISO-10545-4
Impact resistance	As per mfg.	Min. 0.55	ISO-10545-5
SURFACE MECHANICAL PROPERTIES			
Surface abrasion resistance	As per mfg	Min. Class-4	ISO-10545-7
MOH's hardness	As per mfg	Min. 5	EN 101
THERMO HYGROMETRIC PROPERTIES			
Frost resistance	No damage	No damage	ISO-10545-12
Thermal shock resistance	No damage	No damage	ISO-10545-9
Moisture expansion	Nil	0.1 (mm/3)	ISO-10545-10
Thermal expansion (COE)	Max. 9.0 x 10 ⁻⁶	Max. 6.5 x 10 ⁻⁶	ISO-10545-8
Crazing resistance	As per mfg	Min. 7 Cycle	ISO-10545-11
CHEMICAL PROPERTIES			
Chemical resistance	No damage	No damage	ISO-10545-13
Stain resistance	Resistant	Resistant	ISO-10545-14

Size	Thickness (approx.)	Pieces / Box	Area / Box	Wt./Box (approx.)
1200x1800mm	9 mm	2 pcs.	4.32 sq. mtr.	92 kgs.
800x1600mm	9 mm	2 pcs.	2.56 sq. mtr.	52 kgs.

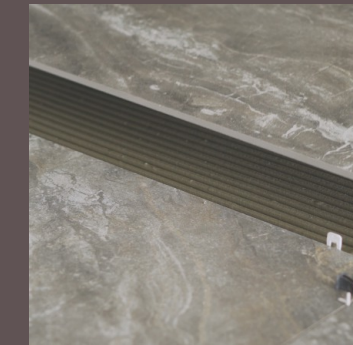
Laying & Levelling



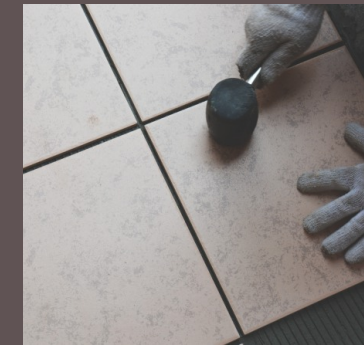
Base Structure



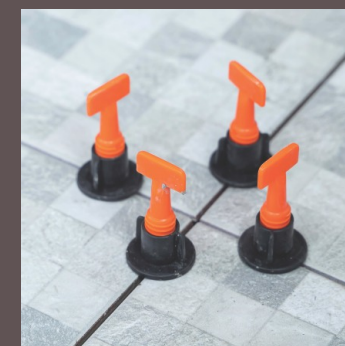
Cement Laying On Tile



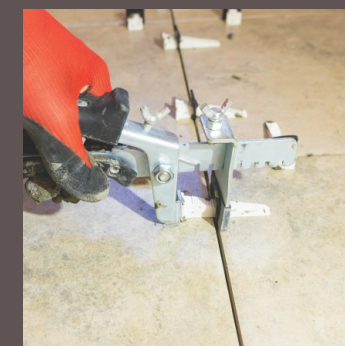
Joints



Fixing The Tile



Spacers + Laveller



Levelling Wedges



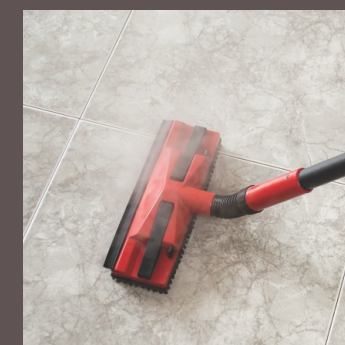
After Levelling Process
Leave Int For 8-10 Hrs.



Remove Wedges
Once It Dry



Joint Grouting



Final Cleaning

Floor and Wall Installation

1. First spread the cement mixer onto the floor and wall substrate.
2. At the same time, apply the cement mixer onto the back of the slab with a tile trowel.
3. The recommended cement mixer must be spread over in one direction only.
4. Using a trowel and follow the same direction as previously applied to the back of the slab.
5. Being careful to maintain a minimum joint of 3mm.
6. Tap the slab with a rubber trowel for a complete fixing, ensuring the air is expelled. It is recommended to start from the centre of the slabs and then move towards the edges.
7. Complete the laying operations using a suitable sealant, while keeping at least a 3mm joint through the use of spacers.
8. To make this task easier, use the special device for pulling over the slabs, available in the market.
9. Levelling wedges at each linear metre of the slabs are recommended.
10. After levelling process leave it for 8-10 hours, remove wedges once it gets dry.

monolith
VOGUISH SURFACES

Khokhara Road, Near Hanuman Temple,
At Bela, Morbi, INDIA

e. info@monolithsurfaces.com
w. monolithsurfaces.com

Scan for Catalogue

