

monolith

VOGUSH SURFACES



CAPTURING ESSENCE OF
ITALIAN SURFACES

GRANOLITH
S U R F A C E

800x
1600
mm

INSPIRING INTERIORS THAT ARE EVER LASTING

Fill up your space with surfaces that are a testimonial to time. Create unique architectural creations that are unique in nature and aggregate a mystic mirage to your space.

Granolith surfaces have been the creators' favorite since they add an aesthetic allure to your space while being radically robust. Add up a distinct diversity of patterns with these surfaces and elaborate your space to a monumental magnetism.



BRING LIFE TO YOUR SPACE
THROUGH A PATTERNIC
PANACHE

23 YEARS *of*
EXCELLENCE

THE PARAMOUNT OF PRECISION

Granolith surfaces roll out an essence of epitome when it comes to durability and strength. With its precise patterns, you can have a sweet takeover of indigenous impressions.

These surfaces embark on a wave of robust creations that are seamless and practical for your space, luxuriating it with pieces of sheer nobility.

800x
1600mm
Granolith Surface_



REIMAGINING THE CANVAS OF CONTEMPORARY

The surfaces come in harmonious hues of natural tones. These tones make your space aesthetic and inviting. These masterpieces reflect ageless, abounding splendor. The colors of these surfaces are visually appealing, making them the absolute choice for your space.

Glazed Vitrified Tiles

Tile Body

The finest quality raw materials make up the resilient and robust tile body of Monolith tiles. The raw materials are ethically sourced and sustainably processed.

Engobe Layer

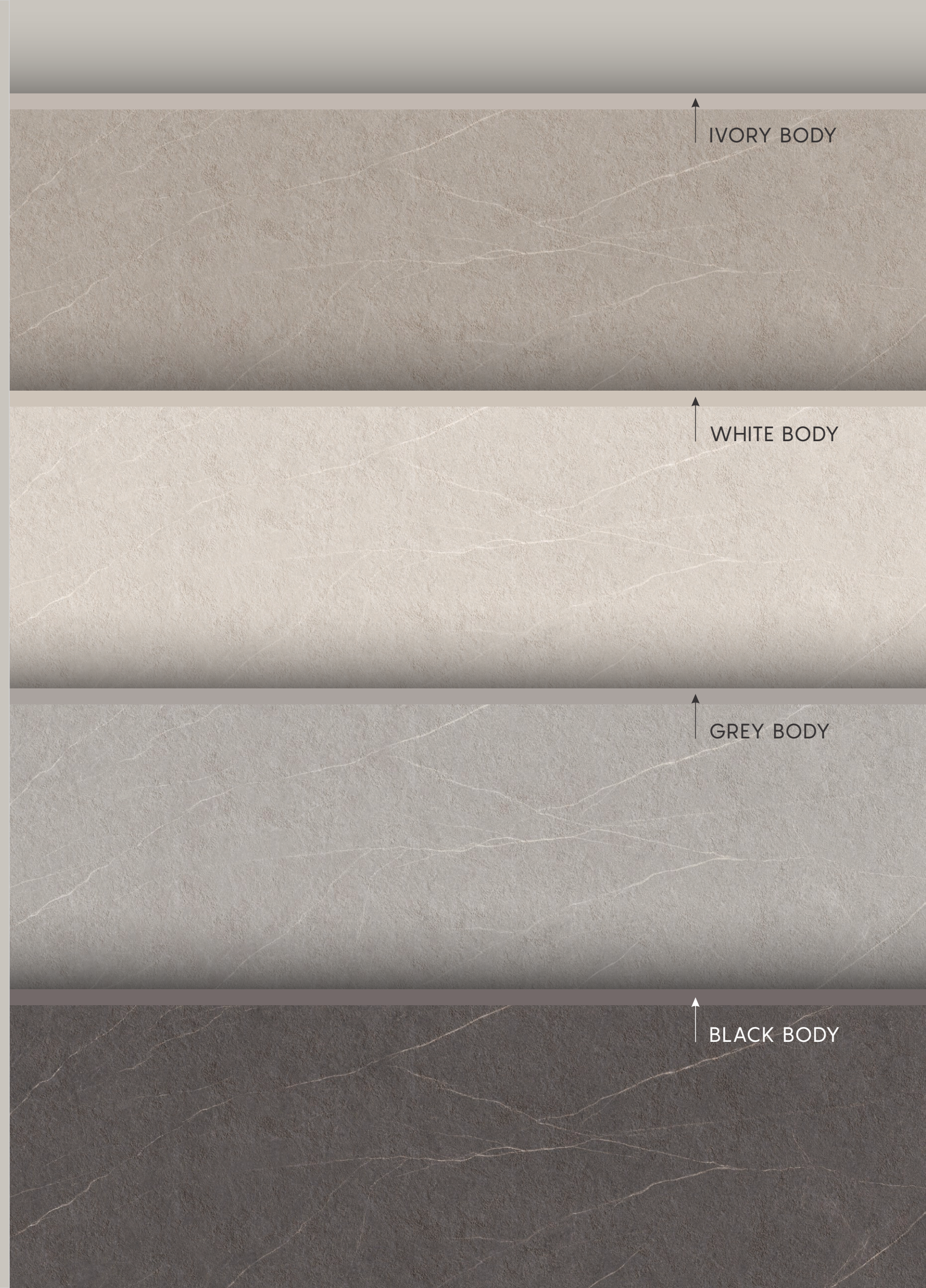
A highly opacious, fusible, and permeable engobe layer makes the second layer of the tiles of Monolith. The layer makes the tiles highly resistant to water absorption for longevity.

High Pigment Digital Printing Ink

The Monolith surfaces get their unique and versatile properties of the design, color, and more in this stage where digital printing is done on the glaze with high pigment ink for excellent results.

Glaze Layer

A high-quality glaze coating is added to the engobe layer of the Monolith tiles giving the tile properties of texture and shine and making them ready for design and color.





REACHING THE UNPARALLELED

STURDY APPROACH

To have a timeless effect

EXQUISITE ELEMENTS OF TERRAINED TEXTURES

Add the texture of charm to your space with surfaces that are bold yet beautifying. The 800x1600mm surfaces have an innate granular texture that resonates with the sincerity of nature. Experience the majestic radiance at your home with these surfaces.

WIDER RANGE WIDER APPLICABILITY



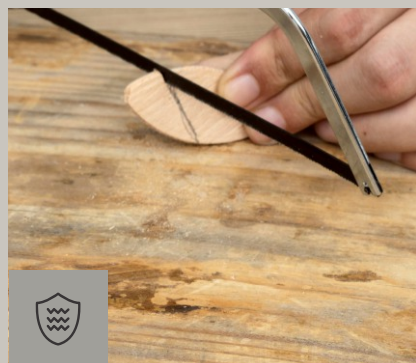
EASY TO CLEAN

Maintain the serene look of your space with surfaces that are easy to clean and maintain.



STAIN RESISTANT

Let spilled items not take away the aesthetics of your space with surfaces that are stain-resistant.










SCRATCH RESISTANT

Experience the abounding beauty of your space with surfaces that are scratch-resistant.

Technical Features:-

- | | | |
|---|---|---|
|  |  |  |
| Easy To Maintain | UV Resistant | Non-slip |
|  |  |  |
| Water Proof | Fire Resistant | Prevents Bacterial Growth |
|  |  |  |
| Dimensional Stability | Resistant To Chemicals | Resistant To Acids |
|  |  |  |
| Heat Resistant | Frost Resistant | Ecological |

Application Areas:-

- | | | |
|---|---|---|
|  |  |  |
| Residence | Shops | Offices |
|  |  |  |
| Airports | Hotels | Public Places |
|  | | |
| Malls | | |





Preview of_ Evoke Ice Plex & Evoke Ice

EVOKE ICE PLEX



EVOKE ICE



Touch For
Hear Virtual



800x
1600mm

Surface
Granolith

Random
3 Faces

Thickness
9mm





Preview of_ Evoke Grigio Plex & Evoke Grigio

EVOKE GRIGIO PLEX



EVOKE GRIGIO



Touch For
Hear Virtual



800x
1600mm

Surface
Granolith

Random
3 Faces

Thickness
9mm





Preview of_ Evoke Sand Plex & Evoke Sand

EVOKE SAND PLEX



EVOKE SAND



Touch For
Hear Virtual



800x
1600mm

Surface
Granolith

Random
3 Faces

Thickness
9mm





Preview of_ Evoke Charcoal Plex & Evoke Charcoal

EVOKE CHARCOAL PLEX



EVOKE CHARCOAL



Touch For
Hear Virtual



800x
1600mm

Surface
Granolith

Random
3 Faces

Thickness
9mm



Technical Specification

CHARACTERISTIC	STANDARD AS PER ISO-13006/EN14411 GROUP BIA	MEAN VALUE OF MONOLITH GVT	TEST METHOD
REGULATORY PROPERTIES			
Deviation in length & width	±0.5 %	±0.2 %	ISO-10545-2
Deviation in thickness	±5.0 %	±4.0 %	ISO-10545-2
Straightness in side	±0.5 %	±0.15 %	ISO-10545-2
Rectangularity	±0.6 %	±0.2 %	ISO-10545-2
Surface flatness	±0.5 %	±0.2 %	ISO-10545-2
Color difference	Unaltered	Slight variation is possible due to different batches as per signed samples	ISO-10545-16
Glossiness	As per mfg	Sharp	GLOSSOMETER
SURFACE MECHANICAL PROPERTIES			
Water absorption	< 0.50 %	< 0.5 %	ISO-10545-3
Apparent density	> 2.0 g/cc	> 2.28 gm/mm ²	DIN 51082
MASSIVE MECHANICAL PROPERTIES			
Modulus of rupture	Min. 35 N/mm ²	Min. 35 N/mm ²	ISO-10545-4
Breaking strength	Min. 1300 N	Min. 1700 N	ISO-10545-4
Impact resistance	As per mfg.	Min. 0.55	ISO-10545-5
SURFACE MECHANICAL PROPERTIES			
Surface abrasion resistance	As per mfg	Min. Class-4	ISO-10545-7
MOH's hardness	As per mfg	Min. 5	EN 101
THERMO HYGROMETRIC PROPERTIES			
Frost resistance	No damage	No damage	ISO-10545-12
Thermal shock resistance	No damage	No damage	ISO-10545-9
Moisture expansion	Nil	0.1 (mm/3)	ISO-10545-10
Thermal expansion (COE)	Max. 9.0 x 10 ⁻⁶	Max. 6.5 x 10 ⁻⁶	ISO-10545-8
Crazing resistance	As per mfg	Min. 7 Cycle	ISO-10545-11
CHEMICAL PROPERTIES			
Chemical resistance	No damage	No damage	ISO-10545-13
Stain resistance	Resistant	Resistant	ISO-10545-14

Size	Thickness (approx.)	Pieces / Box	Area / Box	Wt./Box (approx.)
800x1600mm	9 mm	2 pcs.	2.56 sq. mtr.	52 kgs.

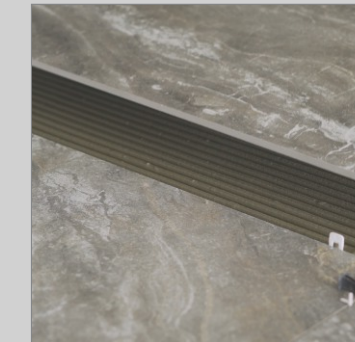
Laying & Levelling



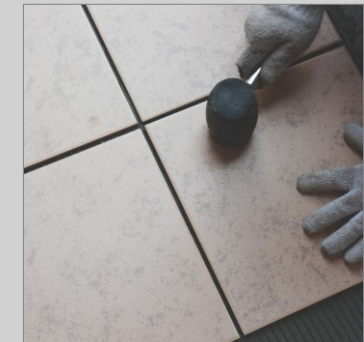
Base Structure



Cement Laying On Tile



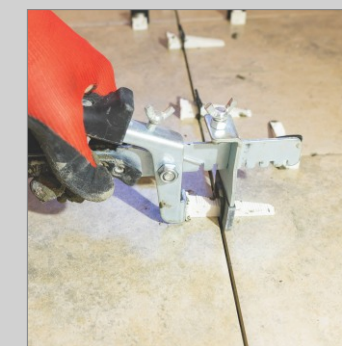
Joints



Fixing The Tile



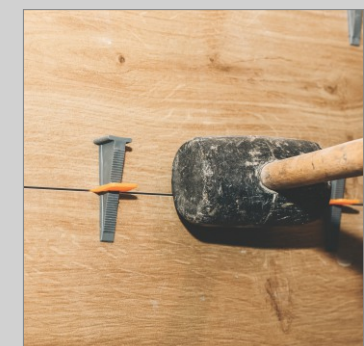
Spacers + Laveller



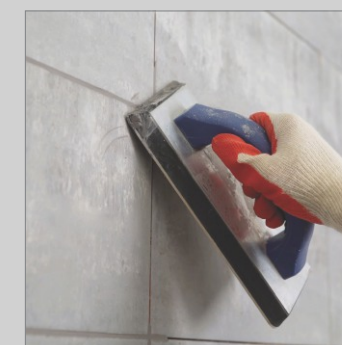
Levelling Wedges



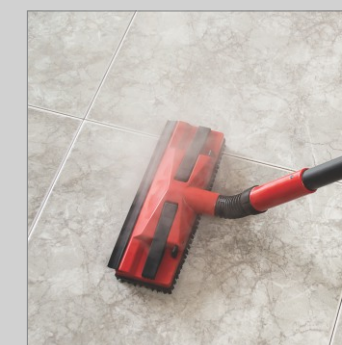
After Levelling Process
Leave Int For 8-10 Hrs.



Remove Wedges
Ones It Dry



Joint Grouting



Final Cleaning

Floor and Wall Installation

1. First spread the cement mixer onto the floor and wall substrate.
2. At the same time, apply the cement mixer onto the back of the slab with a tile trowel.
3. The recommended cement mixer must be spread over in one direction only.
4. Using a trowel and follow the same direction as previously applied to the back of the slab.
5. Being careful to maintain a minimum joint of 3mm.
6. Tap the slab with a rubber trowel for a complete fixing, ensuring the air is expelled. It is recommended to start from the centre of the slabs and then move towards the edges.
7. Complete the laying operations using a suitable sealant, while keeping at least a 3mm joint through the use of spacers.
8. To make this task easier, use the special device for pulling over the slabs, available in the market.
9. Levelling wedges at each linear metre of the slabs are recommended.
10. After levelling process leave it for 8-10 hours, remove wedges once it gets dry.

monolith
VOGUISH SURFACES

Khokhara Road, Near Hanuman Temple,
At Bela, Morbi, INDIA

e. info@monolithsurfaces.com
w. monolithsurfaces.com

Scan for Catalogue

